

INVESTMENT OBJECTIVE

The Institutional Emerging Markets Portfolio seeks long-term capital appreciation through investments in equity securities of companies based in emerging markets.

INVESTMENT PHILOSOPHY & PROCESS

We believe a diversified portfolio of high-quality, durable-growth companies purchased at reasonable prices will provide superior investment returns with below-average risk over the long term. Our analysts conduct careful bottom-up research of individual companies and analyze the competitive dynamics of their industries to identify what we believe are the best growth companies and to assess the value of their shares. To qualify for investment, companies must be well-managed, financially strong, and possess clear competitive advantages relative to their peers.

FUND FACTS

CUSIP	412295701
INCEPTION DATE	10/17/2005
MIN. INVESTMENT ¹	\$500,000
TOTAL FUND ASSETS	\$4,875.4M
SALES CHARGE	None
TOTAL # OF HOLDINGS	77
EXPENSE RATIO	1.28%
TURNOVER (5 YR. AVG.)	22%
REDEMPTION FEE	2% 1st 90 days
DIVIDEND POLICY	Annual
NAV	\$20.47

CONTACT

Harding, Loevner Funds, Inc.
c/o Northern Trust
Attn: Funds Center C5S
801 South Canal Street
Chicago, IL 60607

Phone: (877)435-8105
Email: hardingloevnerfunds@ntrs.com
hardingloevnerfunds.com

The Harding Loevner Funds Institutional Emerging Markets Portfolio is currently closed to new investors.

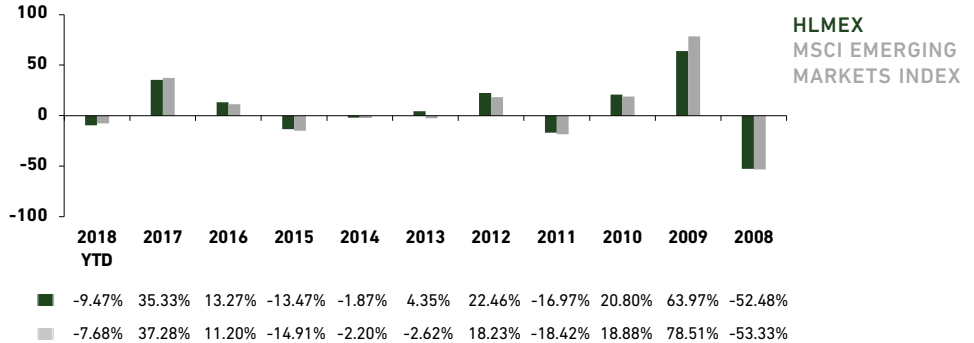
PERFORMANCE (% TOTAL RETURN)

as of September 30, 2018

	INCEPTION DATE	3 MONTHS	1 YEAR	3 YEARS	5 YEARS	10 YEARS
Inst. Emerg. Mrkts Portfolio Class I - Net	10/17/2005	-5.41	-4.30	11.80	4.33	5.89
MSCI Emerging Markets Index		-1.10	-0.81	12.36	3.61	5.40

Returns are annualized for periods greater than one year.

CALENDAR YEAR RETURNS



Performance data quoted represents past performance; past performance does not guarantee future results. The investment return and principal value of an investment will fluctuate so that an investor's shares, when redeemed, may be worth more or less than their original cost. Current performance of the Portfolio may be lower or higher than the performance quoted. Performance data current to the most recent month end may be obtained by calling (877)435-8105 or visiting www.hardingloevnerfunds.com. Performance data shown does not reflect the 2.00% redemption fee imposed on shares held 90 days or less; otherwise, total returns would be reduced.

Diversification does not assure a profit or protect against a loss in a declining market.

SECTOR EXPOSURE (%)

SECTOR	HLMEX	BENCHMARK ²
CONS DISCRETIONARY	12.6	9.0
CONS STAPLES	8.4	6.6
ENERGY	8.3	8.2
FINANCIALS	28.1	23.2
HEALTH CARE	3.3	3.1
INDUSTRIALS	7.5	5.4
INFO TECHNOLOGY	24.6	26.9
MATERIALS	1.3	7.9
REAL ESTATE	0.8	2.8
TELECOM SERVICES	1.3	4.5
UTILITIES	1.9	2.4
CASH	1.9	—

GEOGRAPHIC EXPOSURE (%)

REGION	HLMEX	BENCHMARK ²
BRAZIL	6.9	6.2
CHINA + HONG KONG	31.0	31.0
INDIA	4.3	8.5
MEXICO	5.3	3.1
RUSSIA	7.8	3.7
SOUTH AFRICA	6.5	6.1
SOUTH KOREA	9.8	14.9
TAIWAN	8.4	12.3
SMALL EMERGING MARKETS	11.2	14.2
FRONTIER MARKETS	2.5	—
DEVELOPED MARKETS LISTED	4.4	—
CASH	1.9	—

All holdings and sector/geographic allocations are subject to review and adjustment in accordance with the Portfolio's investment strategy and may vary in the future, and should not be considered recommendations to buy or sell any security. The Portfolio is actively managed; therefore holdings may not be current.

The MSCI Emerging Markets Index is a free float-adjusted market capitalization index that is designed to measure equity market performance in the global emerging markets. The Index consists of 24 emerging market countries. The Index is net of foreign withholding taxes on dividends. You cannot invest directly in this Index.

INVESTMENT ADVISER

Harding Loevner manages global equity portfolios. Our distinct strategies are available to institutions and individuals around the world. Investing in quality-growth companies for the long term has been our exclusive focus since 1989.

PORTFOLIO MANAGERS

SCOTT CRAWSHAW

CO-LEAD PORTFOLIO MANAGER

University of Bristol, BSc, 1989

Harding Loevner since 2014

CRAIG SHAW, CFA

CO-LEAD PORTFOLIO MANAGER

Concordia College, BA, 1986

American Graduate School of

International Management

(Thunderbird), MIM, 1989

Harding Loevner since 2001

PRADIPTA CHAKRABORTY

PORTFOLIO MANAGER

BIRLA Institute of Technology &

Science, BE, 1994

XLRI School of Management, MBA,

1998

University of Pennsylvania, The Wharton

School, MBA, 2008

Harding Loevner since 2008

G. RUSTY JOHNSON, CFA

PORTFOLIO MANAGER

Washington & Lee University, BA, 1986

Harding Loevner since 1994

RICHARD SCHMIDT, CFA

PORTFOLIO MANAGER

Georgetown University, BS, 1986

Harding Loevner since 2011

DISCLOSURES

Source (Alpha, Beta, R-Squared, Standard Deviation, Sharpe Ratio): eVestment Alliance (eA); Harding Loevner Institutional Emerging Markets Portfolio, based on the Portfolio returns; MSCI Inc. Source (other Characteristics): FactSet (Run Date: October 3, 2018), based on the Portfolio's underlying holdings.

Profit Margin: relationship of gross profits to net sales. Return on Assets: net income for past 12 months divided by total assets. Return on Equity: the net income divided by total common equity outstanding, expressed as a percent. Debt/Equity Ratio: total long-term debt divided by total shareholder's equity. Earnings Per Share: portion of a company's profit allocated to each outstanding share of common stock. Alpha: a measure of risk-adjusted return. Beta: a measure of the portfolio's sensitivity to the market. R-Squared: a measure of how well a portfolio tracks the market. Standard Deviation: the statistical measure of the degree to which an individual value in a probability distribution tends to vary from the mean of the distribution. Sharpe Ratio: the return over the risk free rate per unit of risk. Price/Earnings: the ratio of a firm's closing stock price & its trailing 12 months' earnings/share. Price/Cash Flow: the ratio of a firm's closing stock price & its fiscal year end cash flow/share. Price/Book: the ratio of a firm's closing stock price & its fiscal year end book value/share. Average Weighted Market Capitalization: the product of a security's price & the number of shares outstanding. Median Market Cap: the point at which half of the market value of a portfolio is invested in stocks with a greater market cap, and consequently the other half is invested in stocks with a lower market cap.

The Portfolio invests in foreign securities, which will involve greater volatility and political, economic, and currency risks and differences in accounting methods. It also invests in emerging markets, which involve unique risks, such as exposure to economies less diverse and mature than the U.S. or other more established foreign markets. Economic and political instability may cause larger price changes in emerging markets securities than other foreign securities. Investing in participation notes involve the same risks associated with a direct investment in the underlying security, currency or market.

The Portfolio's investment objectives, risks, charges and expenses must be read and considered carefully before investing. The statutory and summary prospectuses contain this and other important information about the investment company. They may be obtained by calling toll free (877) 435-8105, or visiting www.hardingloevnerfunds.com.

While the Portfolio is "no load", management and other expenses still apply. Please refer to the Prospectus for further details. The Portfolio is distributed by Quasar Distributors, LLC.

TEN LARGEST HOLDINGS

	SECTOR	COUNTRY	% ASSETS
TSMC	INFO TECHNOLOGY	TAIWAN	4.9
SAMSUNG ELECTRONICS	INFO TECHNOLOGY	SOUTH KOREA	4.7
TENCENT	INFO TECHNOLOGY	CHINA	3.6
ALIBABA	INFO TECHNOLOGY	CHINA	3.1
LUKOIL	ENERGY	RUSSIA	2.5
AIA GROUP	FINANCIALS	HONG KONG	2.4
NOVATEK	ENERGY	RUSSIA	2.4
SBERBANK	FINANCIALS	RUSSIA	2.4
LG HOUSEHOLD & HEALTH CARE	CONS STAPLES	SOUTH KOREA	2.1
HDFC CORP	FINANCIALS	INDIA	1.9
TEN LARGEST HOLDINGS			30.0%

PORTFOLIO CHARACTERISTICS

QUALITY AND GROWTH	HLMEX	BENCHMARK ²	RISK AND VALUATION	HLMEX	BENCHMARK ²
PROFIT MARGIN ⁴ (%)	17.3	15.4	ALPHA ⁷	1.10	—
RETURN ON ASSETS ⁶ (%)	8.5	7.0	BETA ⁷	0.88	—
RETURN ON EQUITY ⁶ (%)	19.6	16.1	R-SQUARED ⁷	0.92	—
DEBT/EQUITY RATIO ⁶ (%)	35.1	50.5	STANDARD DEVIATION ⁷	13.36	14.54
STD DEV OF 5 YEAR ROE ⁶	3.8	3.4	SHARPE RATIO ⁷	0.29	0.21
5 YEAR ROE ⁶ (%)	18.2	16.5	PRICE/EARNINGS ⁸	15.5	12.3
SALES GROWTH ^{6,7} (%)	9.1	4.2	PRICE/CASH FLOW ⁸	11.8	8.6
EARNINGS GROWTH ^{6,7} (%)	14.2	11.7	PRICE/BOOK ⁸	2.7	1.6
CASH FLOW GROWTH ^{6,7} (%)	15.1	11.4			
SIZE	HLMEX	BENCHMARK ²			
WTD MED MKT CAP (\$B)	26.1	23.5			
WTD AVG MKT CAP (\$B)	79.7	90.0			

Earnings Growth is not a measure of the Portfolio's future performance.

ENDNOTES

PAGES 1 AND 2

(1) Lower minimums available through certain brokerage firms (2) MSCI Emerging Markets Index (3) Includes the remaining emerging markets, which individually, comprise less than 5% of the Index (4) Includes countries with less-developed markets outside the Index (5) Includes emerging markets or frontier markets companies listed in developed markets, excluding Hong Kong (6) Weighted median (7) Trailing five years, annualized (8) Weighted harmonic mean.